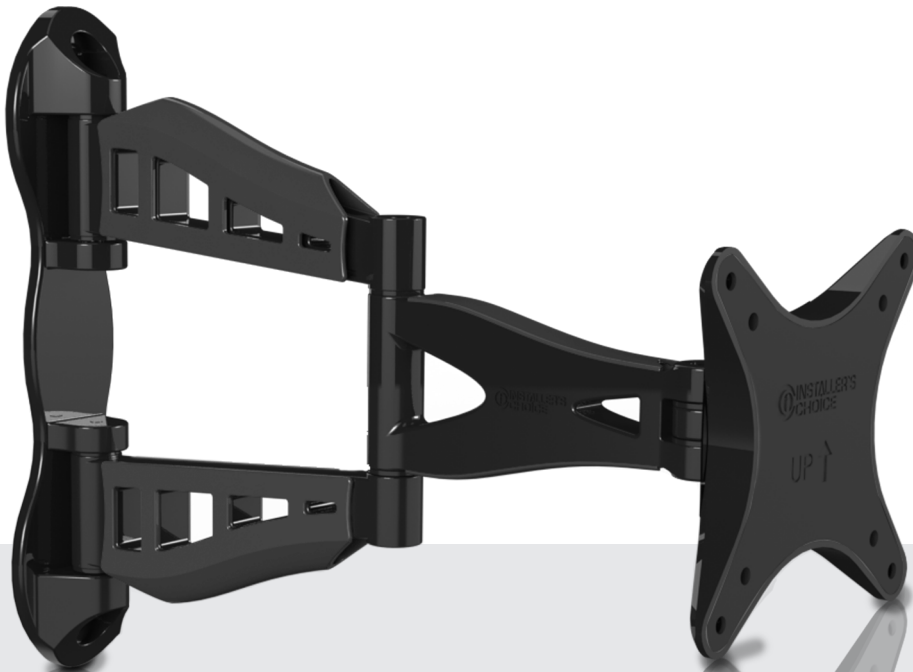


## Flat Panel Articulating Mount IC26S1A1

Product Dimensions

Height: 7.875" Width: 7.875" Depth: 2"



Supports up to 40lbs



Panel Sizes 10"-26"



1 Stud Installation



Tilts -15° thru 15°



### Features and Benefits

Description: The IC26S1A1 articulating mount is part of the Installer's Choice Razor Series. This is an ideal solution for those looking for a combination of flexibility and stability for 10" to 26" flat-panel displays weighing up to 40 lbs. The mount's ultra-slim profile provides seamless, elegant security for your display, placing it just 2" from the wall when closed and extending up to 13.25" off the wall. Full-motion pan, swivel and extension capabilities make this one of the most versatile mounts available. The single stud design makes installation fast and easy. The IC26S1A1 provides the optimal viewing experience from anywhere in a room, offering a full range of motion and allowing viewing adjustments from -15° thru 15° to ensure the best viewing angle.

Universal mount for most 75x75mm - 200x200mm mounting patterns.