

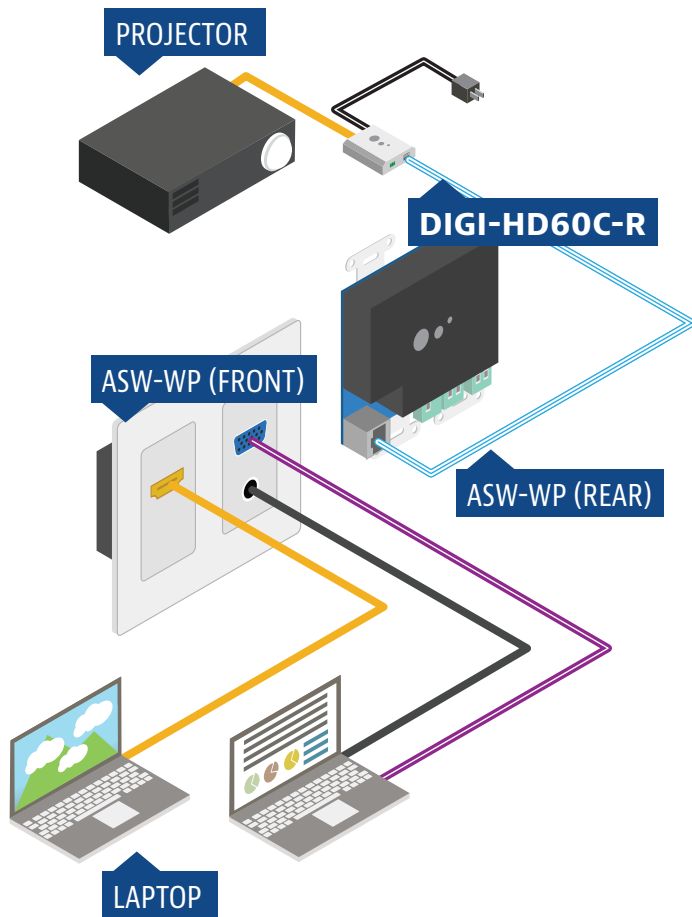
# ASW-WP AUTO-SWITCHING WALLPLATE

Boardrooms, classrooms, auditoriums and other mixed use environments continuously juggle the need for integrating VGA and HDMI laptops and tablets. The Intelix **ASW-WP** auto-switching wallplate merges the analog and digital worlds by providing HDMI and VGA/stereo audio source connectivity, and a fully digital HDBaseT extender output. Ideal for table, floor and wallbox installations, the **ASW-WP** automatically detects live video signal streams, switches between signals, embeds analog video and audio into a digital stream, and extends the signals up to 200 feet to a remote destination. Plus, embedded RS232 control provides remote display control and low power ECO modes.

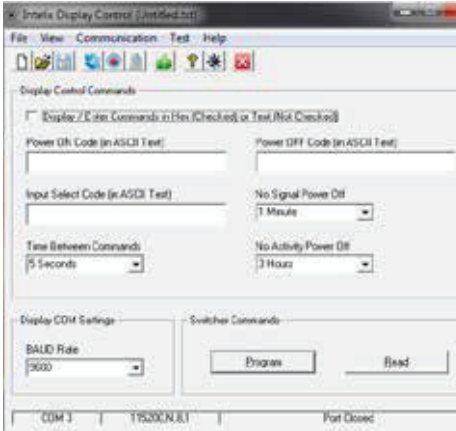
The **ASW-WP** is compatible with Intelix HDBaseT matrix switchers and extenders. When used with an Intelix **DIGI-HD60C-R** twisted pair receiver, the **ASW-WP** receives power remotely via the connected twisted pair cable.

## Key Features

- HDMI and VGA/stereo audio inputs
- HDBaseT extender output
- 1080p distribution up to 60 meters
- 3D, 4kx2k distribution up to 35 meters
- Transmits RS232 commands for display control
- Automatic or manual switching
- VGA to HDMI conversion with audio embedding
- Local power or power over HDBaseT
- Shallow depth – 1.23 overall
- Double gang decora design
- Faceplate fully customizable with PanelCrafters™
- Customizable low power modes
- EDID logic and presets
- Selectable HDCP compliance



The Intelix ASW-WP provides hands-free switching of analog and digital source inputs. It also features selectable HDCP compliance, ensuring non-compliant HDMI laptops and codecs can connect to the digital network.



Intelix **ASW-WP** Display Control software provides seamless control of the connected display or projector. Route power on/off commands and input select commands via RS232, and preset power down commands based on inactivity.

## Key Features

- Power on and off remote displays and projectors
- Toggle inputs
- Create power down presets based on inactivity
- Ensure more Eco friendly installations

## ASW-WP TECH SPECS

### I/O CONNECTIONS

HDMI Input	One (1) HDMI Type A Receptacle (Front)
VGA Input	One (1) Female PC Video HD-15-F Connector (Front)
PC Stereo Audio	One (1) 3.5 mm TRS Receptacle (Front)
HDBaseT Port	One (1) 8P8C port (Shielded RJ45)
Power	One (1) 2 Position Euroblock Connector
EDID Dipswitches	Three (3) dip switches
Contact Closures	One (1) 4 position Euroblock Connector

### VGA Video Resolutions

### SMPTPE:

- 480p@60hz, 576p@60hz, 720p@60hz, 1080p@60hz

### VESA:

- 640x480, 800x600, 1024x768, 1280x768, 1280x800, 1280x1024, 1600x1200, 1680x1050, 1920x1200(RB) - @60hz
- 640x480, 800x600, 1024x768, 1280x1024 - @75hz
- 640x480, 800x600, 1024x768, 1280x1024 - @85hz
- 1024x768 - @70hz
- 640x480, 800x600 - @72hz

### SUPPORTED AUDIO AND VIDEO

HDMI Video Resolutions	SMPTPE: 480i, 480p, 576i, 576p, 720p, 1080i, 1080p
	VESA: Resolutions up to 4k
	Color Depth: 24, 30, 36, 48bit

Maximum Video Compatibility at 60 m

Deep Color 36/30/24 Bit at 1080p (HDMI Input)

Maximum Video Compatibility at 35 m

Deep Color 48 Bit at 1080p, 3D (HDMI Input)

Video Compliance

HDMI and HDCP (Selectable)

HDMI Embedded Audio

Up to PCM 8 channel, Dolby Digital TrueHD, and DTS-HD Master Audio

PC Embedded Audio

Analog stereo line-level (Converted to 2ch 24bit PCM 48kHz)



The Intelix ASW-WP embeds RS232 commands onto the HDBaseT extender output, allowing for seamless control of connected displays and projectors.

## TECH SPECS CONT.

ARC (Audio Return Channel)	No
HEC (HDMI Ethernet Channel)	No
CEC (Consumer Electronics Control)	Yes
Baud Rate (Wall plate control)	9600
Supported Baud Rates (Display Control)	9600, 19200, 57600, 115200

Dimensions	114mm x 116mm x 35mm (4.49 in. x 4.57 in. x 1.38 in.)
Shipping Weight	0.45 kg (1 lbs.)
Operating Temperature	0° to +40° C (+32° to +104° F)
Operating Humidity	20% to 90%, Non-condensing
Storage Temperature	-10° to +60° C (+14° to +140° F)
Storage Humidity	20% to 90%, Non-condensing

## HDBASET SIGNAL CHARACTERISTICS

Maximum Distance	60 m
Cable Requirements	Category 6, or 6A with TIA/EIA-568B crimp pattern
Bandwidth	10.2 Gbps
Gain	0 dB – 10 dB at 100 MHz
Signal to Noise Ratio (SNR)	> 70 dB at 100 MHz over 100 m
Return Loss	< -30 dB at 5KHz
Total Harmonic Distortion (THD)	< 0.005% at 1 KHz
Min-Max Signal Level	< 0.3 V – 1.45 Vp-p
Differential Phase Error	±10° at 135 MHz over 100 m
Regulatory	CE, RoHS

## CHASSIS AND ENVIRONMENTAL

Construction	Black painted metal plate (Back Cover)
Faceplate Colors	White, Almond (Sold Separately), Black (Sold Separately) – ABS Plastic

## POWER, ESD, AND REGULATORY

Power Supply	5vDC 2A or PoH (Power-Over-HDBaseT)
Power Consumption	10 watts
Automatic Standby Mode	30 minutes no signal
ESD Protection	16kV
Regulatory	CE, RoHS

## OTHER

Warranty	2 years
Diagnostic Indicators	Front Panel: Two (2) Bicolor LED: Blue, (Purple), Amber HDBaseT: Three (3) SMDs: Heartbeat – Blue, Link – Yellow, HDMI – Green
Included Accessories	White Faceplate Set and Installation Manual
HDBaseT Receiver (A/V, PoH, Control) Compatibility	DIGI-HD60C-R
HDBaseT Receiver (A/V, Control) Compatibility	DIGI-HDE-R, FLX-BI4
HDBaseT Receiver (A/V Only) Compatibility	DIGI-HD70-R

Distances and picture quality may be affected by cable grade, cable quality, source and destination equipment, RF and electrical interference, and cable patches. Intelix specifications are based on straight-through cabling with standard-grade Cat 6 unless noted otherwise.



The ASW-WP is fully customizable with PanelCrafters WebBlox software.

# QUOTES AND UP-FRONT PROOFING

PanelCrafters™ offers the most streamlined and accurate proofing process in the industry. Proofs are consistent between our on-line quoting programs and quotes produced by PanelCrafters staff. PanelCrafters up-front proofing process makes the quote-to-order process fast and easy.



Up-front proofing ensures that we produce your panels exactly as you requested so your highest quality plates and panels are on-time – every time. Requests that include non-stock materials or require additional

engineering may be quoted and returned without design proofs. When ordered, these parts will be engineered and proofs will be submitted prior to production. No ordered product can be manufactured without your signed proof.

APPROVAL REQUIRED (sign below and return)

1

P.O. NUMBER:

Connector List:		
Qty	P/N	Description
Material: 0.125 inch Aluminum		
1	PMI-B13	VGA-AUDIO-HDMI BALUN ASW-WP

TOLERANCE	
X.X	±0.015
X.XX	±0.010
X.XXX	±0.005

<b>PANEL CRAFTERS</b> Liberty Wire & Cable - www.libertycable.com Contact: - phn:800-530-8998 - fax:719-260-0076	Reference: <b>3</b>	Company Name: Liberty Wire & Cable	Engraved Units: (characters & lines) 7	<small>To approve, sign top left corner and return with Purchase Order. Changes to materials or layout may require re-quoting and/or re-proofing.</small>
Part Number: <b>4</b>	Panel Color: <b>5</b>	Text Color: black	Panel Size: 2GANG	Designed by LLindstrom
LIBER-CQ84199-1			Date 05-29-2013	Scale NTS
			Sheet 1/1	

- 1** Approval box for you to sign when ordering plates
- 2** Precise graphical representation of the finished plate  
Lead time and pricing breakdowns by requested quantity
- 3** Company and project reference information (provided by you)  
Full dimensions are shown when needed to ensure accuracy
- 4** Unique part number for each plate or panel design  
(for easy ordering and reordering)
- 5** Plate specifications including plate color and finish



**Need Help?**  
Call or Email!  
[sales@panelcrafters.com](mailto:sales@panelcrafters.com)  
800.530.8998