

## PO-2XX Two channel output ground isolator

- Drives balanced and unbalanced signals long distances
- Eliminates hum and buzz caused by ground loops
- Withstands input levels in excess of +26 dB at 30 Hz
- Plug & play easy to use, no power required

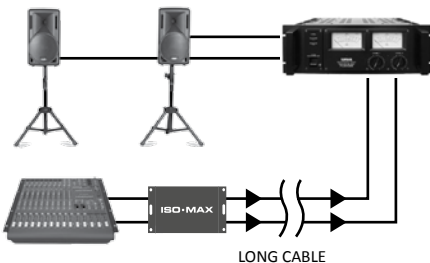


The Iso•Max PO-2XX is a two-channel line output isolator for both balanced and unbalanced signals where extreme signal handling is required to drive long cable runs.

The design begins with a rugged flanged enclosure that comes standard with gold plated XLRs and a removable screw-down barrier strip for easy installation in NEMA enclosures. Plug and play easy to use, this passive interface does not require any power to work. Inside are two high performance nickel core Jensen transformers that are able to withstand signals in excess of +26 dB without discernible distortion while delivering a linear response to 150 kHz. This provides galvanic isolation between the input and output to eliminate hum and buzz caused by ground loops, rejecting noise by as much as 110 dB. To further optimize the performance, a bottom mounted eight position 'set & forget' dip switch enables the user to configure the PO-2XX grounding scheme as needed.

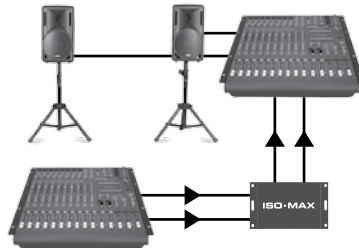
Made to accommodate both balanced or unbalanced signals, simply connect the PO-2XX anywhere you like between the source and destination and the PO-2XX will quietly go to work as it delivers exceptional audio while eliminating ground loops and electromagnetic interference (EMI). This makes the Iso•Max PO-2XX a superb choice for the most demanding studio, broadcast and performance venue installations.

### Applications



#### PO-2XX with a PA system

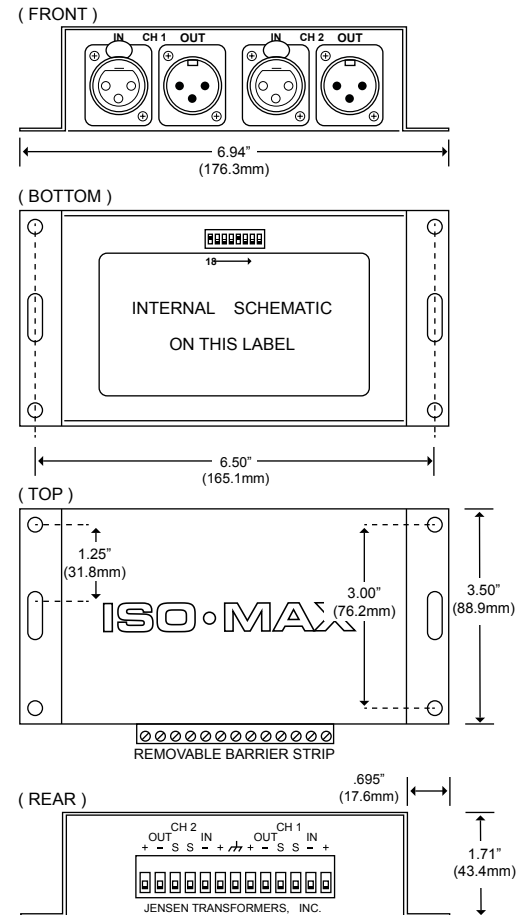
Eliminating noise in a PA system can sometimes take hours of trouble shooting, particularly when the mixer, amplifiers and speakers are distanced apart. Simply connect the PO-2XX at the output of your mixer to instantly eliminate hum and buzz caused by ground loops.



#### Isolating one console from the other

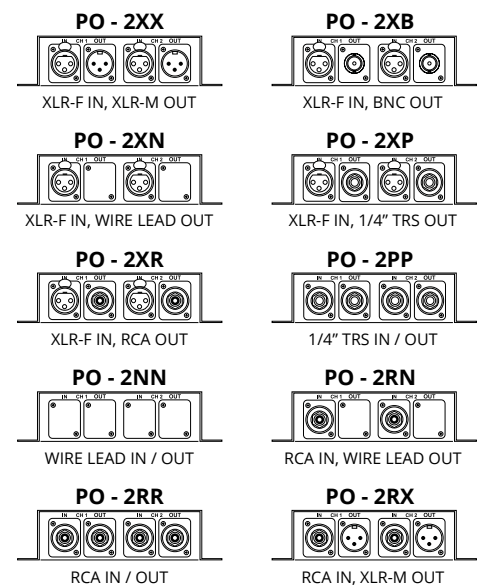
Whether you are isolating two consoles in a festival or experiencing noise when connecting to a drive rack, the PO-2XX is easily inserted into the signal chain to break the ground loop and eliminate noise as it easily handles huge bass transients without distortion.

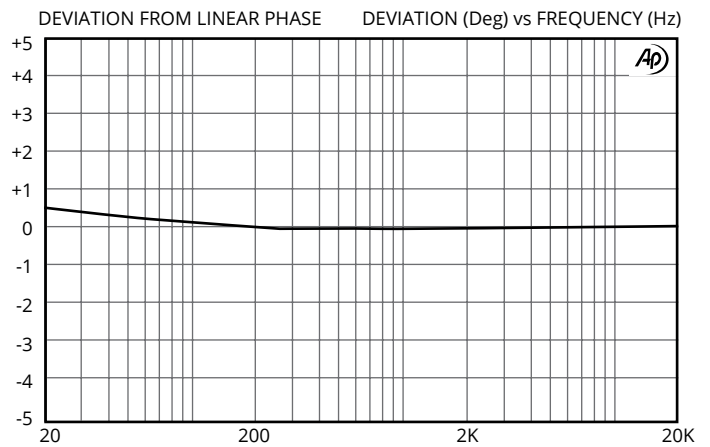
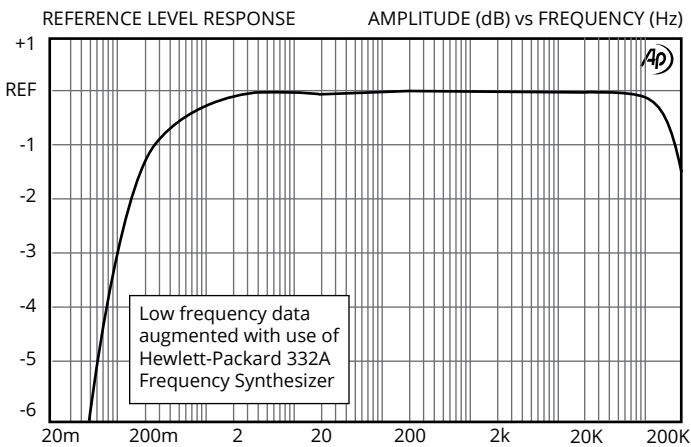
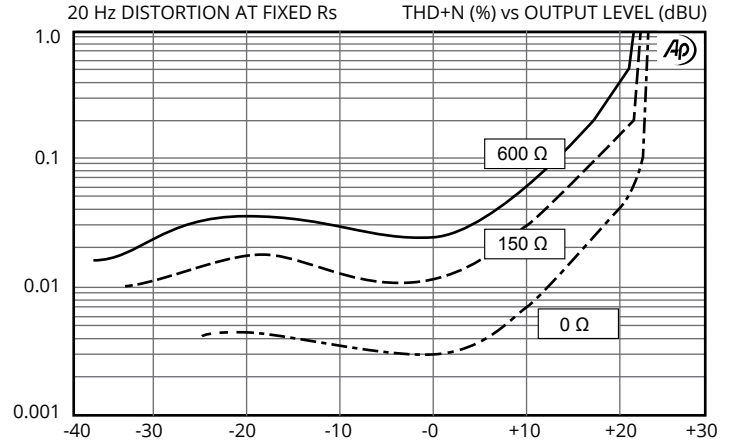
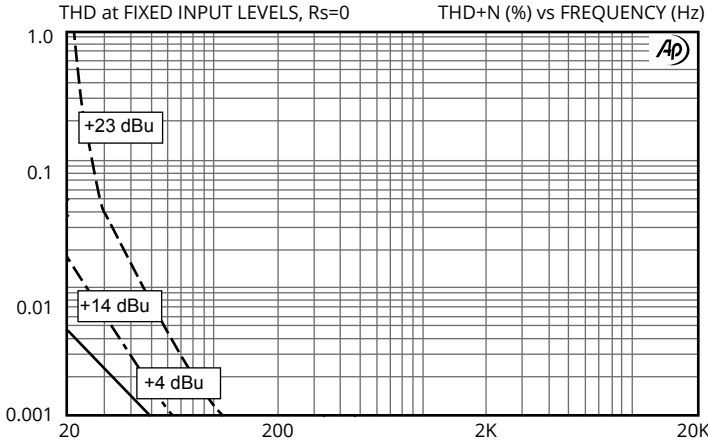
### Dimensions



### Connector options

The PO-2XX comes standard with XLR inputs and outputs. It is also available special order with the following connector configurations for use with both balanced and unbalanced systems.



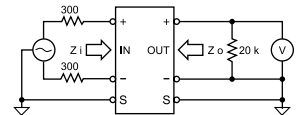


PARAMETER	CONDITIONS	MINIMUM	TYPICAL	MAXIMUM
Input impedance, Zi	20 Hz to 20 kHz, 0 dBu, test circuit 3, Ri = 600 Ω	670 Ω	680 Ω	690 Ω
	1 kHz, 0 dBu, test circuit 3, Ri = 20 kΩ			
Voltage gain	1 kHz, 0 dBu, test circuit 1, Rs = 0 Ω	-1.2 dB	-1.1 dB	-0.9 dB
Magnitude response, ref 1 kHz	20 Hz, 0 dBu, test circuit 1, Rs = 0 Ω	-0.1 dB	-0.02 dB	±0.0 dB
	20 kHz, 0 dBu, test circuit 1, Rs = 0 Ω	-0.1 dB	±0.0 dB	+0.1 dB
Deviation from linear phase (DLP)	20 Hz to 20 kHz, 0 dBu, test circuit 1, Rs = 0 Ω		+0.3 / -0°	±1.0°
Distortion (THD)	1 kHz, +4 dBu, test circuit 1, Rs = 0 Ω		<0.001%	
	20 Hz, +4 dBu, test circuit 1, Rs = 0 Ω		0.004%	0.03%
Maximum output level	20 Hz, 1% THD, test circuit 1, Rs = 0 Ω	+20 dBu	+22 dBu	
Common - mode rejection ratio (CMRR)	60 Hz, test circuit 2		110 dB	
	3 kHz, test circuit 2	75 dB	85 dB	
Recommended source impedance	output impedance of device connected the ISO-MAX input	0	600 Ω	2 kΩ
Recommended load impedance	input impedance of device connected the ISO-MAX output	150 Ω	20 kΩ	∞
Output impedance, Zo	20 Hz to 20 kHz, 0dBu, test circuit 4		80 Ω	
Optimal cable length (balanced)	input		50 m (150')	200 m (600')
	output		100 m (300')	300 m (1000')
Optimal cable length (unbalanced)	input		8 m (25')	15 m (50')
	output		No limitations	
Temperature range	operation or storage	0°C		70°C
Input to Output Voltage Difference*	any input to any output shield or any shield to case, 60 Hz			24 V RMS 34 V peak

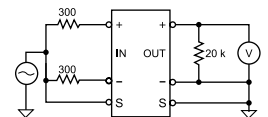
All levels are output unless noted

\* IMPORTANT NOTE: THIS PRODUCT IS NOT INTENDED FOR USE IN CIRCUMSTANCES WHERE THE DC OR PEAK AC VOLTAGE BETWEEN INPUT AND OUTPUT CONNECTIONS EXCEEDS 34 VOLTS OR WHERE ITS FAILURE COULD CAUSE INJURY OR DEATH.

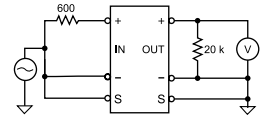
Test Circuit 1:



Test Circuit 2:



Test Circuit 3:



All minimum and maximum specifications are guaranteed. Unless noted otherwise, all specifications apply at 25°C. Specifications subject to change without notice. All information herein is believed to be accurate and reliable, however no responsibility is assumed for its use nor for any infringements of patents which may result from its use. No license is granted by implication or otherwise under any patent or patent rights of Jensen Transformers, Inc.