

## Media-2 Two channel direct box

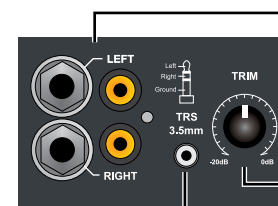
- Converts instrument and line level signals to balanced mic level
- Eliminates hum and buzz caused by ground loops
- Ruler flat frequency response from 20 Hz to 20 kHz
- Features variable input trim for quick adjustments on stage

The Iso-Max Media-2 is a multi-purpose stereo direct box and isolator designed to interface all types of unbalanced sources to the PA system while enabling signals to be driven distances to 100 meters (300') or more without high frequency loss or introducing noise into the signal path.

The design begins with a rugged extruded aluminum enclosure and steel slide-in inner tray with recessed zones at each end to protect the switches and connectors. At one end, stereo 1/4" inputs for instruments, RCA inputs for consumer audio devices and a 3.5mm mini TRS for laptops are wired in parallel to act as thru-puts. A variable trim decreases input sensitivity for greater signal handling when interfacing line level sources. At the other end, two XLR male outputs with ground lift makes for easy connection. As the Iso-Max Media-2 is completely passive, no power is required.

Inside, two high-performance Jensen JT-DB-EPC transformers delivers exceptional audio and provides galvanic isolation to eliminate ground loops as it passively lowers the impedance and performs the balancing. A 22 kΩ input impedance optimizes signal-to-noise for consumer-type products and is supplemented with internal Faraday shielding to protect against interference from RF. An external MuMETAL<sup>®</sup> can further protects the sensitive internal workings of the transformer to ensure a quiet interference-free performance even when surrounded by magnetic fields from amplifiers, power supplies and stage light dimmers.

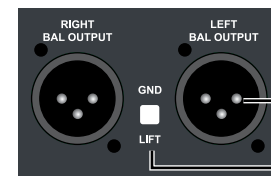
With over +22 dB of signal handling capacity, the Media-2 direct box gracefully handles extreme signals such as those produced by high output digital sources while providing instant access to level adjustments during hectic shows. These features combine to make the Media-2 the ideal choice for multi-media technicians and presenters.



**INPUTS** - 1/4" and RCA stereo input can be used with CD players, tape decks, VCRs, etc. A second set of RCA jacks can be used as a thru-put.

**Trim** - Used to set the level going into the Media-1.

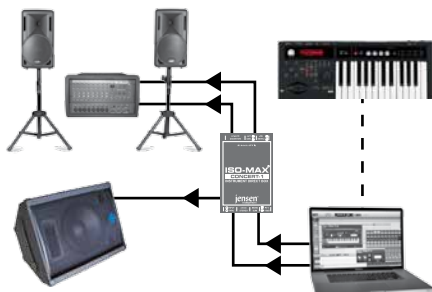
3.5mm TRS - TRS input provides interface for laptops and tablets.



**Balanced Outputs** - Balanced low-z outputs enables long cable runs without noise.

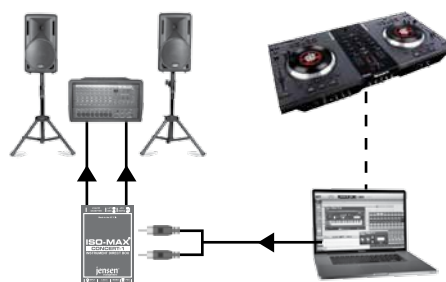
**Ground Lift** - Disconnects the ground path pin-1 for the XLR output

## Applications



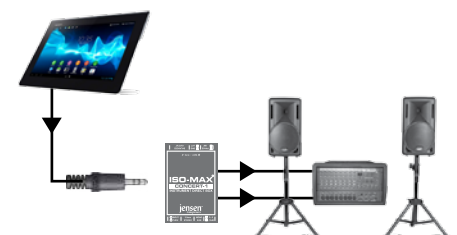
### Using in a keyboard setup

Use your laptop as a sound source with the Media-2 connected to control the volume and send a balanced signal to a PA system.



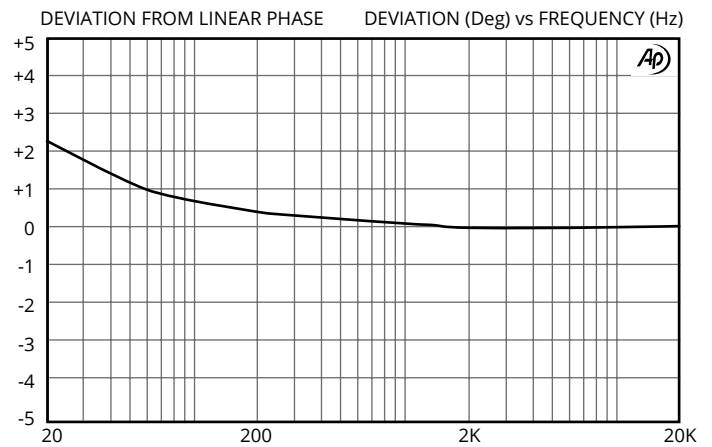
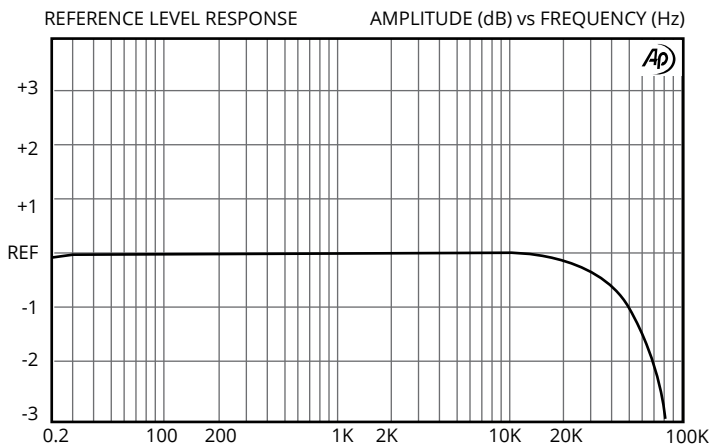
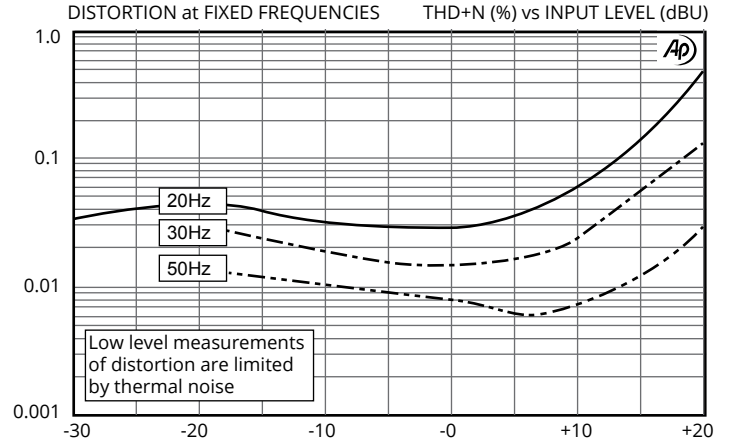
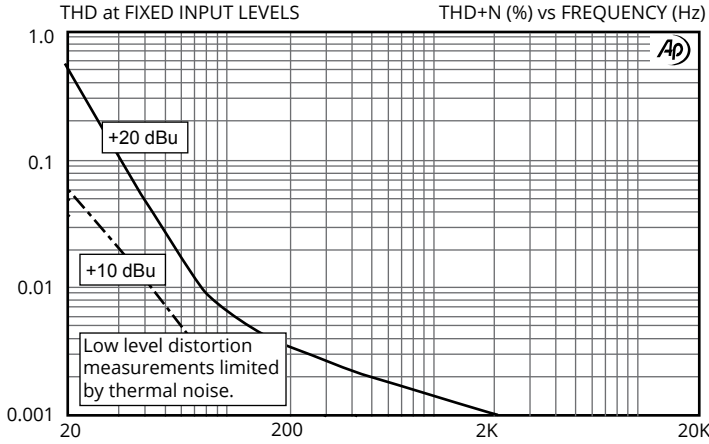
### Using with a DJ setup

Simplify your DJ setup using a PC to play sound files and the Media-2 to balance the signal. The handy volume control makes it easy to manage.



### Using with a tablet

Play your sound files using the Media-2 by connecting it from the headphone output to the 3.5mm input. Use the variable level control to trim the level and avoid distortion.

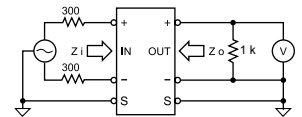


PARAMETER	CONDITIONS	MINIMUM	TYPICAL	MAXIMUM
Input impedance, Zi	1 kHz, 0 dBu, test circuit 1	19 kΩ	22 kΩ	
Voltage gain	1 kHz, 0 dBu, test circuit 1		-20 dB	-40 dB
Magnitude response, ref 1 kHz	20 Hz, +4 dBu, test circuit 1	-0.25 dB	-0.08 dB	0.0 dB
	20 kHz, +4 dBu, test circuit 1	-0.25 dB	-0.07 dB	+0.1 dB
Deviation from linear phase (DLP)	20 Hz to 20 kHz, +4 dBu, test circuit 1		+1.2/-0°	±2.0°
Distortion (THD)	1 kHz, +4 dBu, test circuit 1		<0.001%	
	20 Hz, +4 dBu, test circuit 1		0.036%	0.10%
Maximum 20 Hz input level	1% THD, test circuit 1	+19.5 dBu	+21.5 dBu	
Input common mode rejection ratio (CMRR) unbalanced source	60 Hz, test circuit 2		80 dB	
	3 kHz, test circuit 2	40 dB	45 dB	
Output impedance, Zo	1 kHz, test circuit 1	145 Ω	150 Ω	155 Ω
Optimal cable length	input*		3 m (10')	15 m (50')
	output		30 m (100')	150 m (500')
Temperature range	operation or storage	0°C		70°C

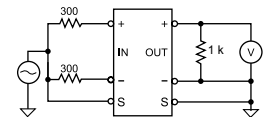
All levels are input unless noted

\*Passive instruments such as a Fender Jazz bass are subject to noise as their signal is not buffered by an active preamp. For these keeping the input cable shorter will result in less noise.

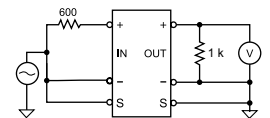
Test Circuit 1:



Test Circuit 2:



Test Circuit 3:



All minimum and maximum specifications are guaranteed. Unless noted otherwise, all specifications apply at 25°C. Specifications subject to change without notice. All information herein is believed to be accurate and reliable, however no responsibility is assumed for its use nor for any infringements of patents which may result from its use. No license is granted by implication or otherwise under any patent or patent rights of Jensen Transformers, Inc.

\*\* IMPORTANT NOTE: THIS PRODUCT IS NOT INTENDED FOR USE IN CIRCUMSTANCES WHERE THE DC OR PEAK AC VOLTAGE BETWEEN INPUT AND OUTPUT CONNECTIONS EXCEEDS 34 VOLTS OR WHERE ITS FAILURE COULD CAUSE INJURY OR DEATH.